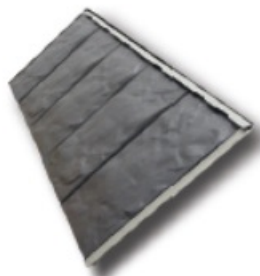


METALWORKS® STEEL SHINGLES

ASTONWOOD® • STONECREST® SLATE • STONECREST® TILE

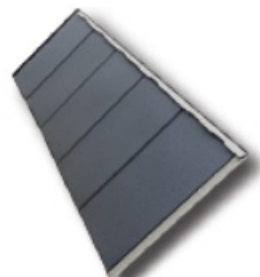
PRODUCT DATA



STONECREST® SLATE steel shingles create the dramatic look and random finish of natural slate. The double-stamped manufacturing process creates stunning beauty. Available in a beautiful array of colors.



ASTONWOOD® steel shingles combine the look of cedar shingles with galvanized steel to produce a roofing product which replicates the rich look of wood. Available in a wide array of beautiful colors.



STONECREST® TILE steel shingles create the distinctive look of smooth, uniform tile. For those who appreciate a contemporary and refined appearance.

USES: For application to roof decks with inclines not less than 3 inches per foot and up to mansard or sidewall application. For slopes between 3 and 4 inches per foot, TW Metal & Tile Underlayment or TW Underlayment must be used over entire deck area.

- 50 Year Limited Product Warranty, 25 Year Full Start Period, Limited Transferability, a 30 Year Finish Limited Warranty, and a 50 Year Limited Wind Warranty against damage from winds up to 110 mph when applied in accordance with TAMKO's High Wind Application instructions.
- G-90 steel construction.
- Kynar 500®/Hylar 5000® finish.
- Can be used for reroofing applications—install over up to two layers of asphalt shingles. Check your local building code. Building code restrictions may apply.
- A beautiful choice for a wide range of residential and commercial applications on decks greater than 3 inches per foot.
- Available in a full array of colors, all of which are ENERGY STAR qualified.
- Four-way locking system.
- 100% recyclable.

SHINGLES BEGIN TO AGE AS SOON AS THEY ARE EXPOSED TO NATURE. BUILDINGS EXPERIENCE AGING FACTORS DIFFERENTLY, SO IT IS DIFFICULT TO PREDICT HOW LONG SHINGLES WILL LAST. THAT'S WHY TAMKO PROVIDES A LIMITED WARRANTY, THAT INCLUDES A BINDING ARBITRATION CLAUSE AND OTHER TERMS AND CONDITIONS WHICH ARE INCORPORATED HEREIN BY REFERENCE. YOU MAY OBTAIN A COPY OF THE LIMITED WARRANTY AT TAMKO.COM OR BY CALLING 1-800-641-4691.

CERTIFICATIONS

UL Listed for Class A Fire Rating:	UL 790/ASTM E 108, Class A **
UL Classified for Wind Resistance:	ASTM D 3161, Class F
UL Classified in accordance with:	ASTM D 2218 Class 4 Impact Resistance
Evaluation Reports:	UL ER18590-01 ICC-ES ESR1129
Canadian Construction Materials Centre Report:	CCMC 13011-R

** Contact TAMKO or Underwriters Laboratories for specific application requirements for U.L. Class A rated systems.

COLORS

STONECREST® SLATE

- Quaker Green
- Sierra Slate Grey
- Vermont Blue
- River Rock Brown
- Sequoia Red

STONECREST® TILE

- Quaker Green
- Sierra Slate Grey
- Vermont Blue

ASTONWOOD®

- Forest Green
- River Rock Brown
- Sierra Slate Grey
- Canyon Copper Bronze
- Timber Brown
- Vermont Blue
- Brite Red
- Sequoia Red



All MetalWorks shingles are ENERGY STAR qualified and rated by the Cool Roof Rating Council.



MetalWorks, AstonWood, StoneCrest and TAMKO are registered trademarks of TAMKO Building Products, Inc. Fluoron® and Valspar® are registered trademarks of The Valspar Corporation, Inc. Kynar 500® is a registered trademark of Arkema, Inc. Hylar 5000® is a registered trademark of Solvay Solexis, Inc.



Construction Materials International, Inc
 Address: 202 East 7th Avenue, Tampa, Florida 33602, USA
 Tel: (+1)813-287-8265 / Fax: (+1)813-287-8144
 Email: sales@awg-llc.com / Web: www.cmi-us.com

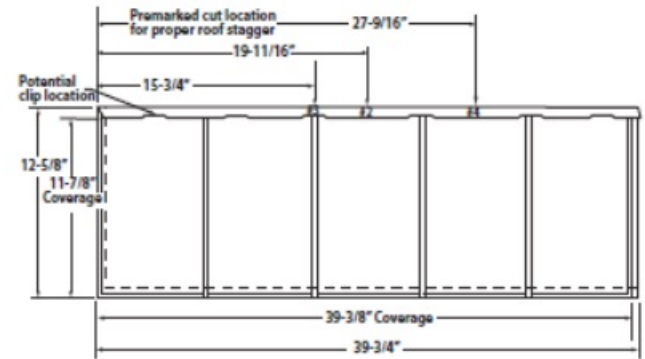
METALWORKS® STEEL SHINGLES

ASTONWOOD® • STONECREST® SLATE • STONECREST® TILE

PRODUCT DATA

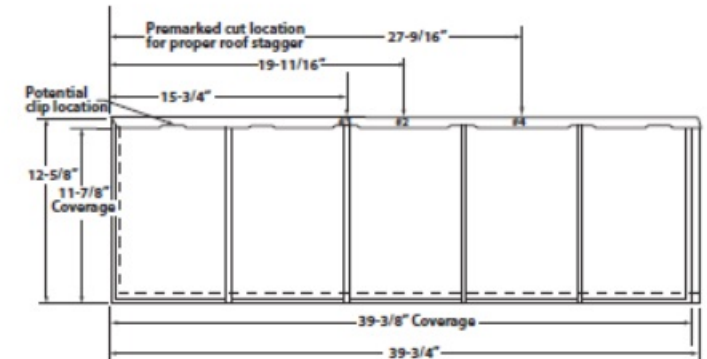
STONECREST SLATE†

Shingle size	12-5/8" × 39-3/4"
Exposure	12"
Coverage per Box	49.2 sq.ft.
Shingles per Box	15
Shingles per Sales Square**	30



STONECREST TILE†

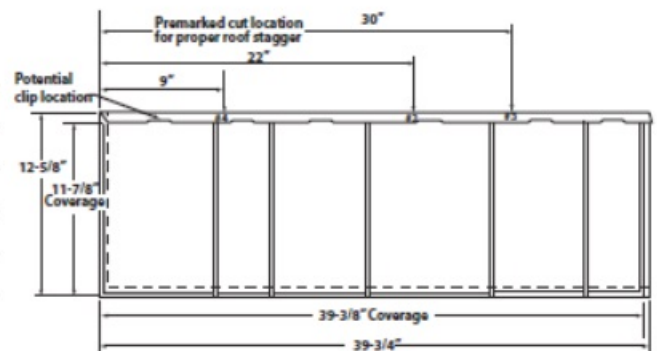
Shingle size	12-5/8" × 39-3/4"
Exposure	12"
Coverage per Box	49.2 sq.ft.
Shingles per Box	15
Shingles per Sales Square**	30



Shingle Material	28 gauge nominal 0.0162" (0.066802 cm) thickness, including G-90 galvanization and paint coatings.
Exterior Finish	Fluoropolymer (PVDF) with primer, 1 mil dry film thickness.
Interior Finish	Wash coat with primer, 0.6 mil dry film thickness.
Clip	1-1/4" wide × 2-1/8" long × 1/5" deep
Clip Material	0.015" thick, G-90 galvanized steel

ASTONWOOD†

Shingle size	12-5/8" × 39-3/4"
Exposure	12"
Coverage per Box	98.4 sq.ft.
Shingles per Box	30
Shingles per Sales Square**	30



Shingle Material	30 gauge nominal 0.0135" (0.03429 cm) thickness, including G-90 galvanization and paint coatings.
Exterior Finish	Fluoropolymer (PVDF) with primer, 1 mil dry film thickness.
Interior Finish	Wash coat with primer, 0.6 mil dry film thickness.
Clip	1-1/4" wide × 2-1/8" long × 1/5" deep
Clip Material	0.015" thick, G-90 galvanized steel

† All values stated as nominal. ** When applied according to instructions.



Construction Materials International, Inc
 Address: 202 East 7th Avenue, Tampa, Florida 33602, USA
 Tel: (+1)813-287-8265 / Fax: (+1) 813-287-8144
 Email: sales@awg-llc.com / Web: www.cmi-us.com